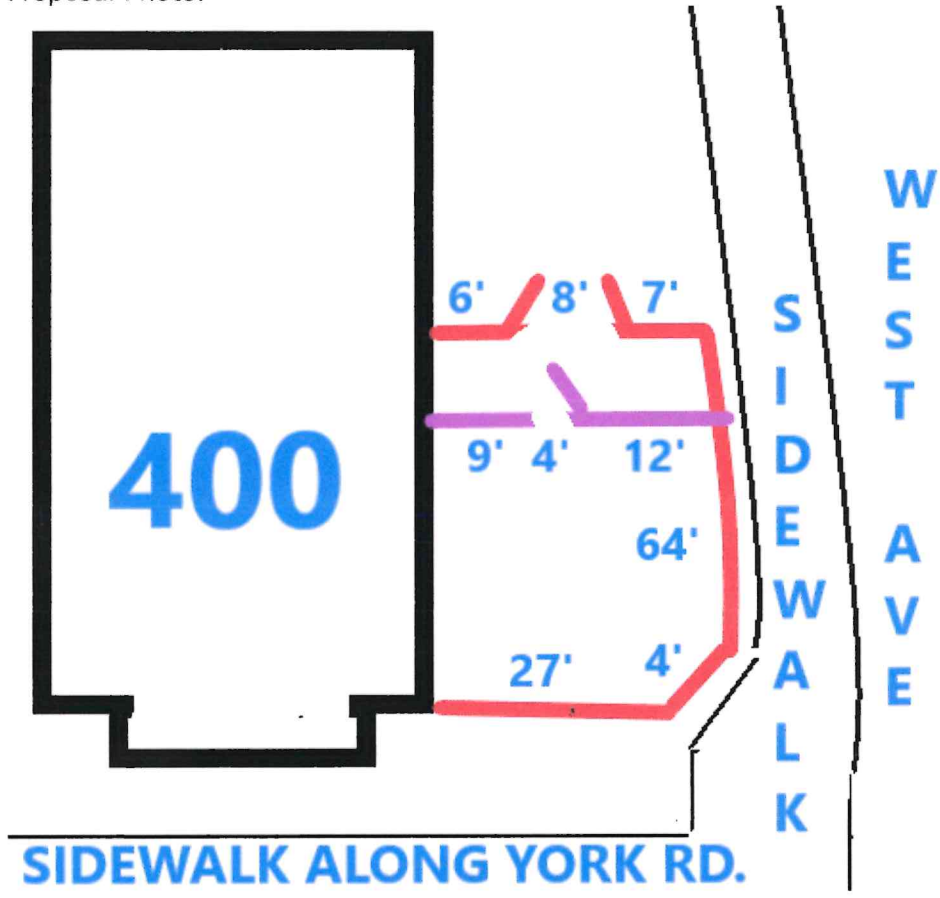
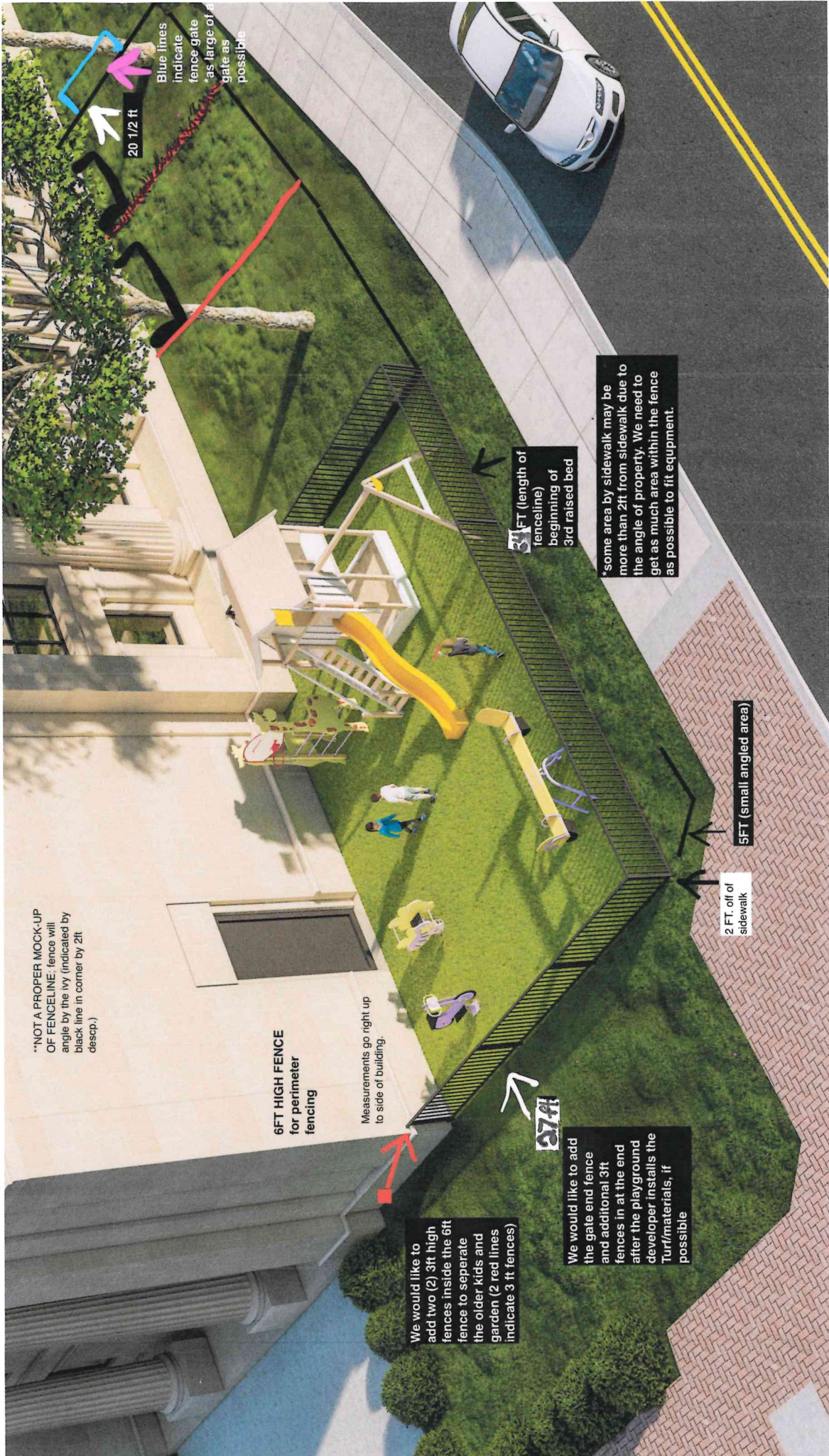


Proposal Photo:



*sidewalk is 86 inches (7ft 2 inches)
*Fence line will be 2 feet setback from sidewalk
~~***~~ *[Signature]*



**NOT A PROPER MOCK-UP OF FENCELINE: fence will angle by the ivy (indicated by black line in corner by 2ft descp.)

6FT HIGH FENCE for perimeter fencing

Measurements go right up to side of building.

We would like to add two (2) 3ft high fences inside the 6ft fence to separate the older kids and the garden (2 red lines indicate 3 ft fences)

We would like to add the gate end fence and additional 3ft fences in at the end after the playground developer installs the Turf/materials, if possible

37ft

31 FT (length of fence line) beginning of 3rd raised bed

*some area by sidewalk may be more than 2ft from sidewalk due to the angle of property. We need to get as much area within the fence as possible to fit equipment.

2 FT. off of sidewalk

5FT (small angled area)

20 1/2 ft

Blue lines indicate fence gate as large of a gate as possible